

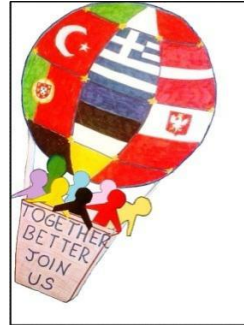
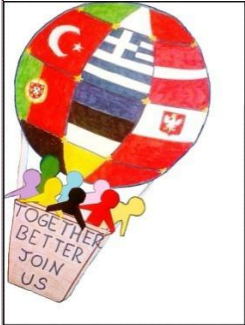
# PROJECT:

## "TOGETHER BETTER-JOIN US!"

The questionnaire for students

May 2017

Kohtla-Järve Kindergarten Tareke



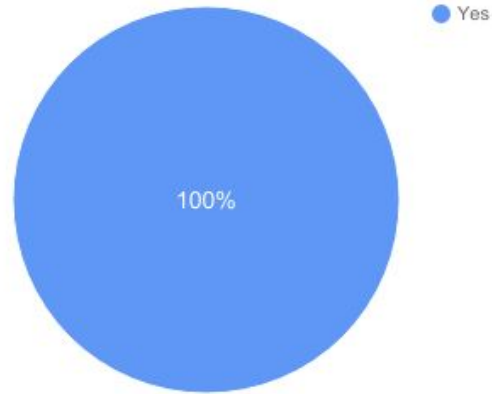
Erasmus+



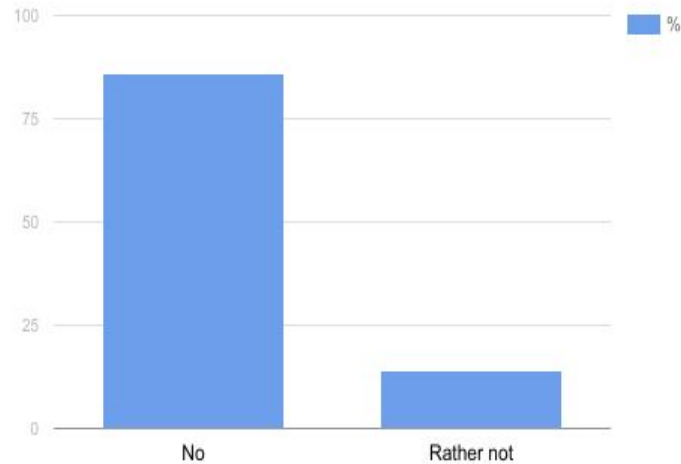
Co-funded by the  
Erasmus+ Programme  
of the European Union



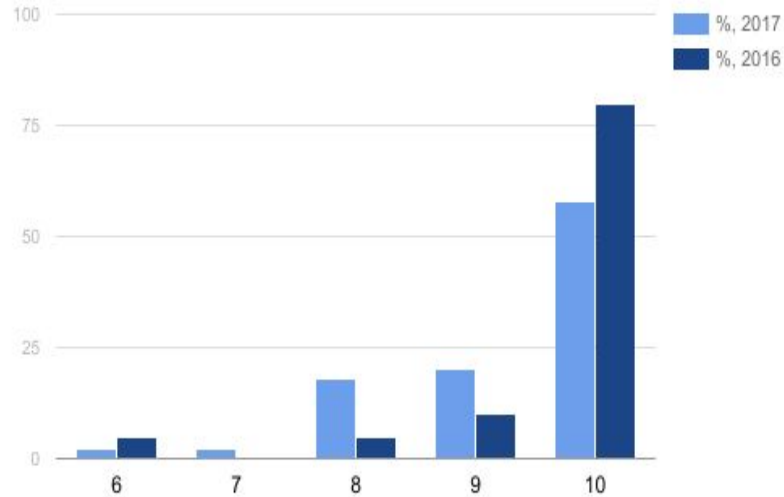
# 1. Do you like going to school?



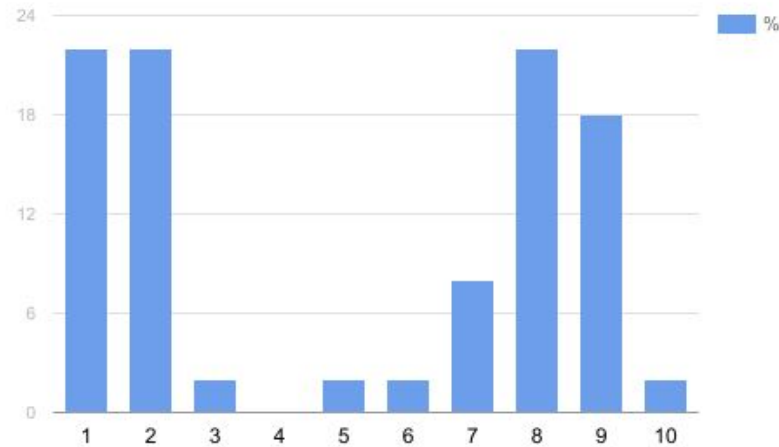
## 2. Do you feel lonely, rejected, not accepted by your colleagues at school?



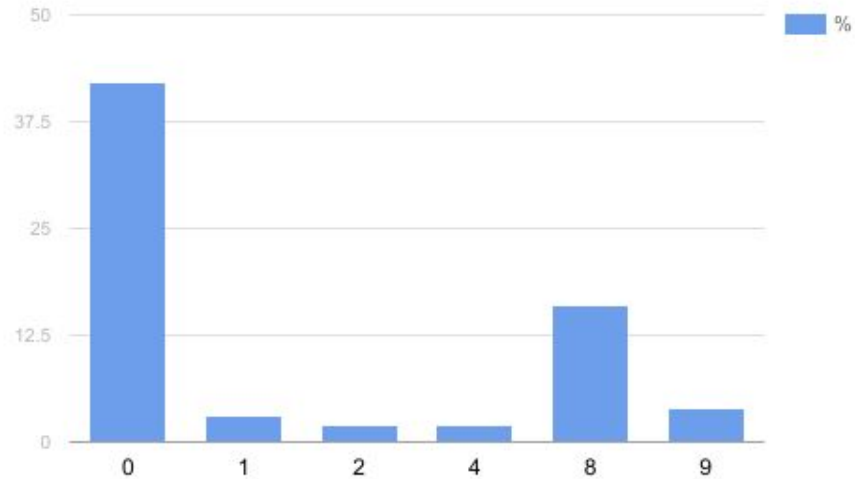
**3. How do you imagine your future? Mark on the scale from 0 to 10, given that the higher the note, the better and more interesting the future will be.**



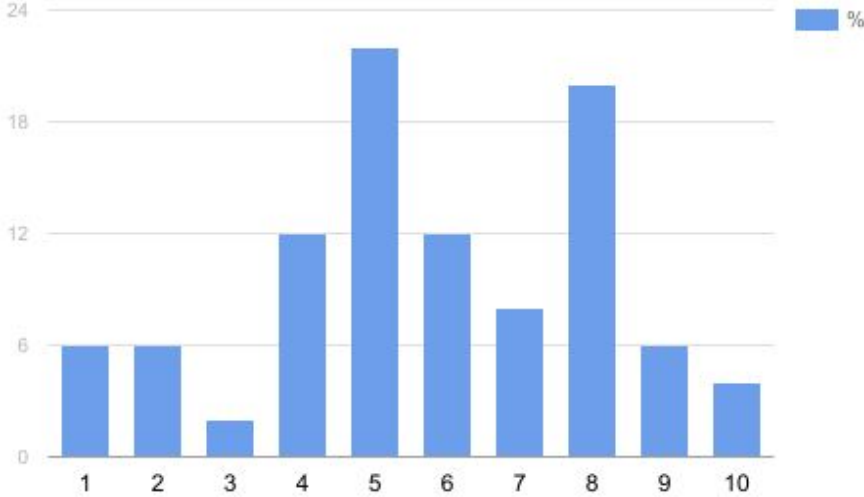
## 4. How would you assess your knowledge about the partner countries?



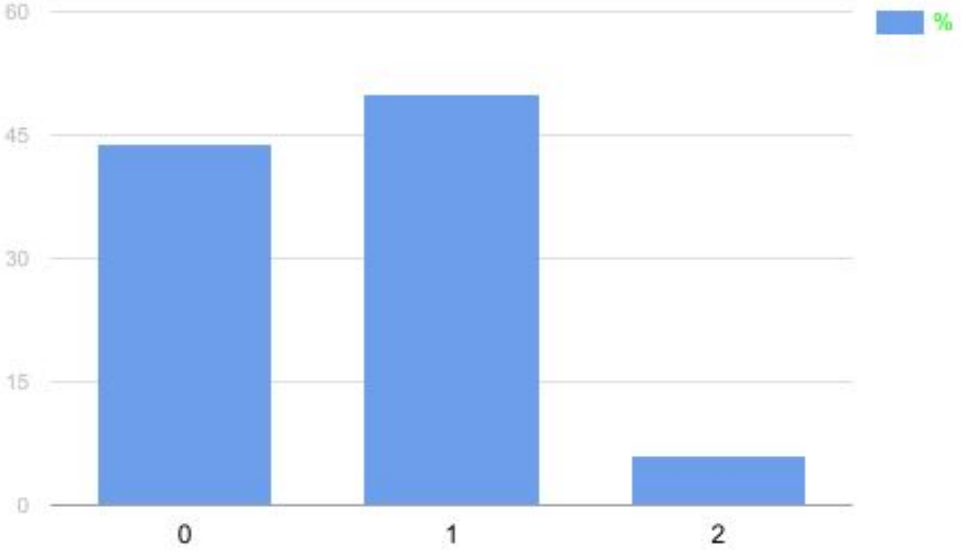
## 5. How would you assess your relations with the colleagues from the other countries?



# 6. How would you assess your information and communication technology skills?



**7.Mark, from 0 to 10, the escalation of the problem (isolation of your colleagues):**





# CONCLUSION

100% pupils think that the school situation has improved in terms of social exclusion.

100% pupils feel better at school than before the project started.

THANK YOU!