

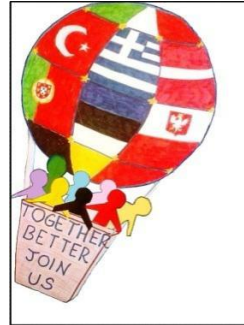
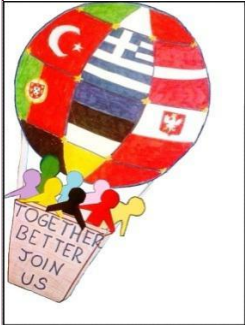
# PROJECT:

## "TOGETHER BETTER-JOIN US!"

The questionnaire for parents

May 2017

Kohtla-Järve Kindergarten Tareke



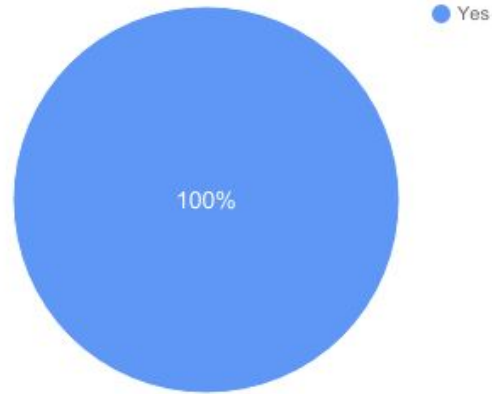
Erasmus+



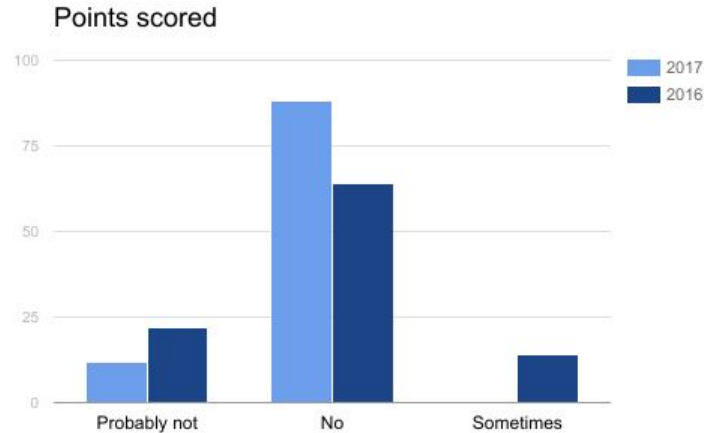
Co-funded by the  
Erasmus+ Programme  
of the European Union



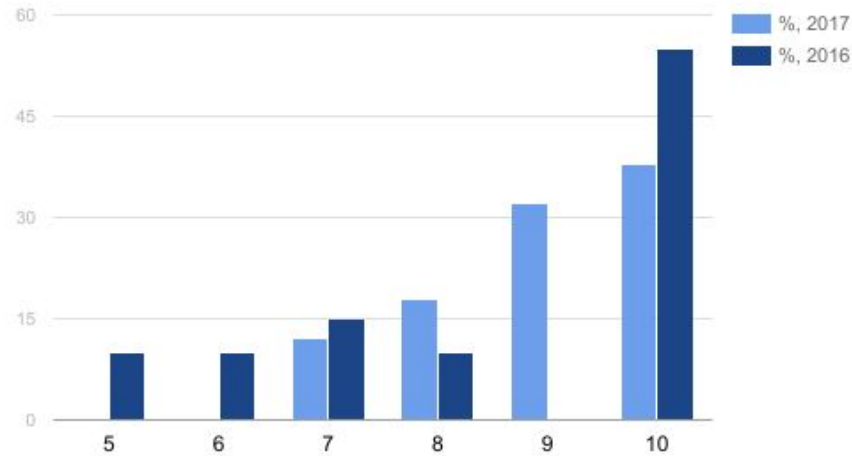
# 1. Does your child like going to school?



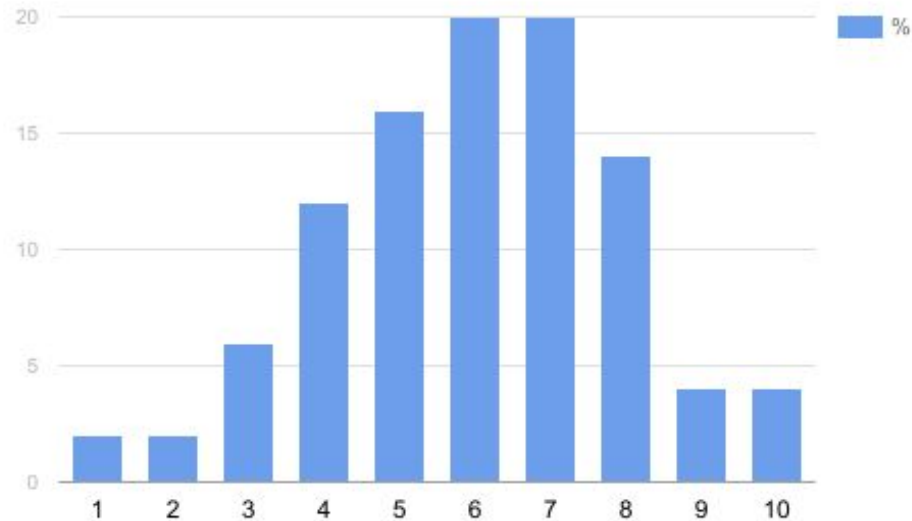
## 2. Does your child feel at school alone, rejected, not accepted by friends, colleagues? (Please tick the one that applies the most)



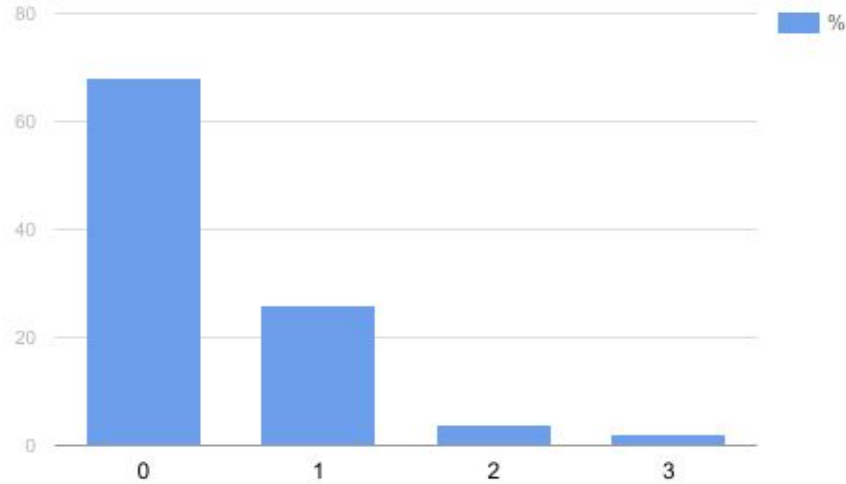
**3. Please mark on a scale of 0 to 10, as you imagine the future of your child, assuming that the higher the note, the better and more interesting future.**



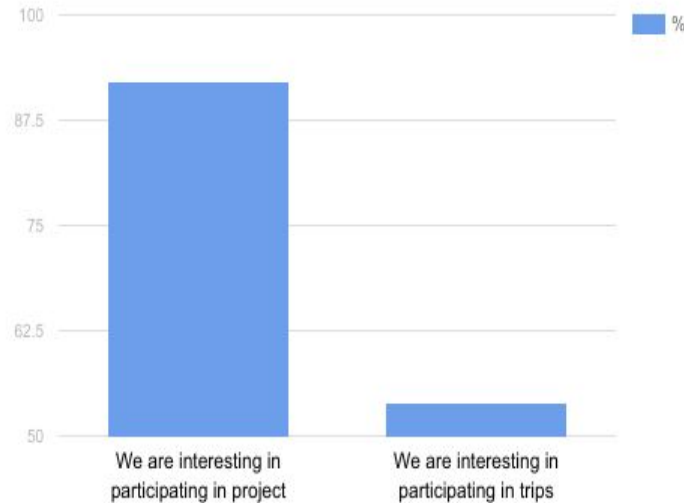
## 4. How do you assess the skills of your child(ren) in the field of information technology and communication?



**Please rate on a scale of 0 to 10 the severity of the problem of isolation your child in the school:**



# What is your opinion about your children's participation in European projects (including-trips):



## **CONCLUSION**

**30% parents think that the school situation has improved in terms of social exclusion**



THANK YOU!